

# TSKgel<sup>®</sup> SP-STAT and CM-STAT Columns

#443

## INTRODUCTION

TSKgel SP-STAT and TSKgel CM-STAT cation exchange columns allow fast equilibration and analysis, as well as isolation, of complex biomolecules. Both TSKgel columns are packed with 7 or 10  $\mu\text{m}$  mono-disperse, non-porous resin particles of which the surface consists of an open access network of multi-layered cation exchange groups (see Figure 1). The innovative bonding chemistry, combined with a relatively large particle size, result in a respectable loading capacity and a low operating pressure, attributes not found in traditional mono-disperse, non-porous resins.

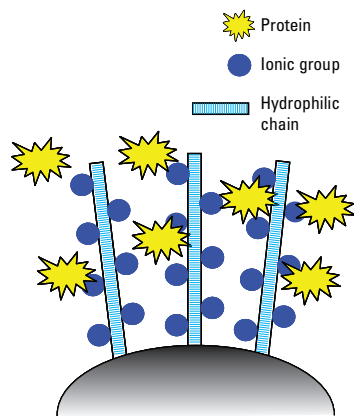
## PRODUCT HIGHLIGHTS

- Very efficient chromatography for high as well as low MW solutes made possible by novel bonding chemistry and the absence of micro-pores
- High speed and high resolution analysis of bio-molecules
- Higher adsorption capacities and lower pressures compared with competitive non-porous columns
- 7 or 10  $\mu\text{m}$  particles for SP and CM chemistries

## APPLICATIONS

### FAST SEPARATIONS

The fast separation of protein standards was investigated using short cation exchange columns (see Figure 2). A TSKgel SP-STAT column shows superior resolution, better peak shape, and a shorter analysis time (< 60 seconds) compared to a competitive monolithic SP-type column.



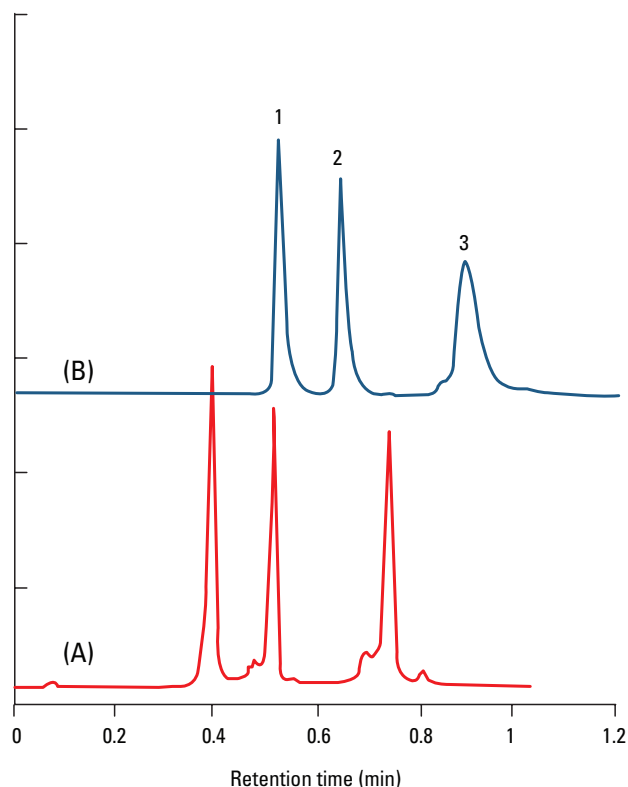
➤ Figure 1

## REACTION MONITORING

A sample of  $\beta$ -lactoglobulin (5 mg/mL) was reacted with polyethylene glycol (5 kDa) in a pH 6.5 phosphate buffer. The formation of PEGylated protein reaction products was monitored in 5 minute intervals on a 3.5 cm TSKgel SP-STAT column. As demonstrated in Figure 3, peak areas of mono-, di-, and tri-PEGylated  $\beta$ -lactoglobulin increased with reaction time, while the area of unreacted  $\beta$ -lactoglobulin declined.

## ANTIBODY ANALYSIS

The analysis profiles for five antibodies separated on a TSKgel CM-STAT column were compared with the profiles obtained on a competitive WCX column (Figure 4). Similar or higher resolution profiles were obtained on TSKgel CM-STAT in approximately half the time.



Column: A: TSKgel SP-STAT; 10 $\mu\text{m}$ , 3.0mm ID x 3.5cm

Column: B: Competitor column 4.6 mm ID x 5.0 cm L  
 Eluent: A: 20 mmol/l sodium acetate (pH 5.0); B: 1.0 mol/l NaCl in buffer A (pH 5.0) for column A; 1.5 mol/l NaCl in buffer A (pH 5.0) for column B;  
 Gradient: 0% B (0 min), 100% B (1 min); Flow rate: A: 2.0 ml/min; B: 4.73 ml/min; Detection: UV @ 280 nm;  
 Samples: 1.  $\alpha$ -chymotrypsinogen A; 2. cytochrome C; 3. lysozyme



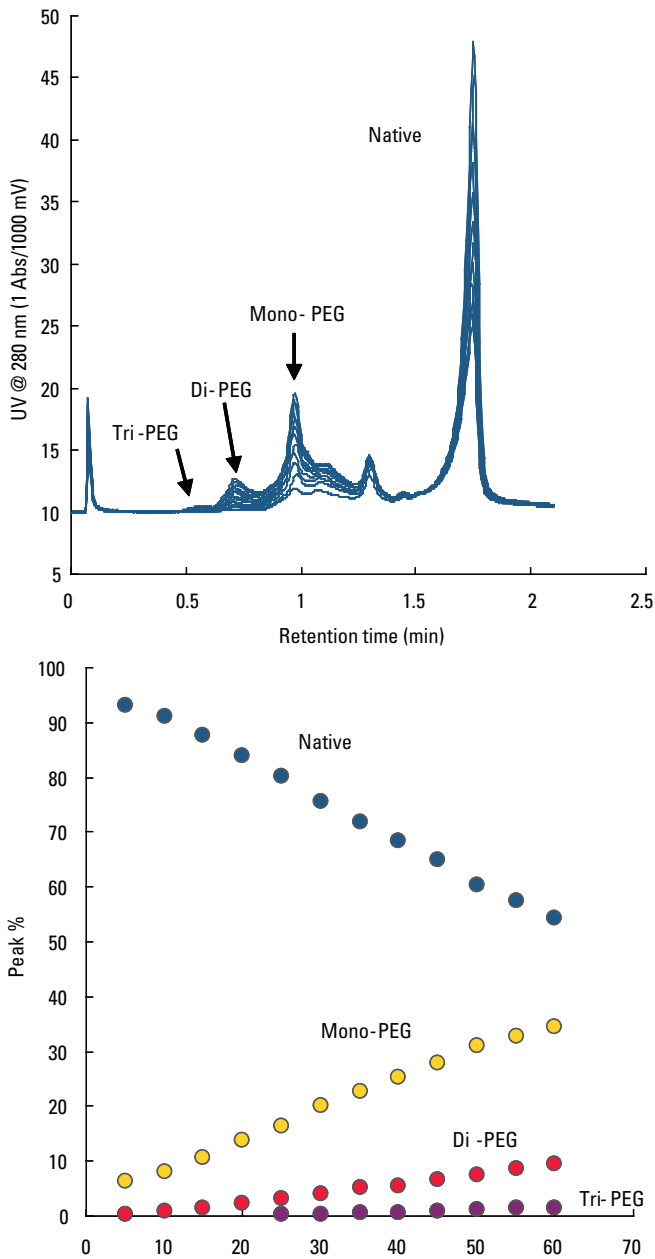
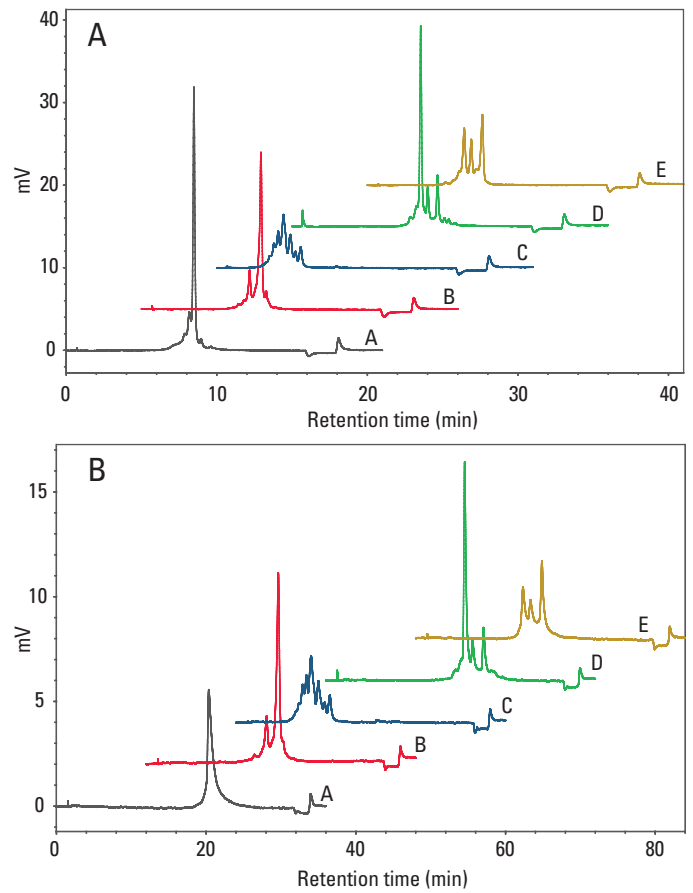


Figure 1

Column: TSKgel SP-STAT, 10  $\mu$ m, 3.0 mm ID x 3.5 cm L; Eluent: A: 20 mmol/l sodium acetate (pH 5.0); B: 1.0 mol/l NaCl in buffer A (pH 5.0); Gradient: 0% B (0 min), 100% B (2 min); Flow rate: 2.0 ml/min; Detection: UV @ 280 nm; Samples: PEGylated  $\beta$ -lactoglobulin



Columns: A: TSKgel CM-STAT, 7  $\mu$ m, 4.6mm ID x 10cm  
Figure 2

Column: A: TSKgel CM-STAT, 7  $\mu$ m, 4.6 mm ID x 10 cm L; B: Competitor WCX, 10  $\mu$ m, 4.0 mm ID x 25 cm L;  
Eluent: A: 20 mmol/L MES (pH 6.0); B: 20 mmol/L MES + 0.5 mol/L NaCl (pH 6.0)  
Gradient: A: 10% B (0 min), 30% B (15 min), 100% B (15 min), 100% B (17 min), 10% B (17 min), 10% B (21 min); B: 10% B (0 min), 30% B (30 min), 100% B (30 min), 100% B (32 min), 10% B (32 min), 10% B (36 min)  
Flow rate: A: 1.0 mL/min B: 2.0 mL/min; Temp.: Ambient; Detection: UV @ 280 nm; Inj. Vol.: 20  $\mu$ L; Sample: monoclonal antibodies (mAb A through E)

## Ordering information

### TSKgel STAT COLUMNS

Part-No	Description	Matrix	Housing	Dimensions
21963	TSKgel SP-STAT, 10 µm	Polymer	Stainless steel	3.0 mm ID x 3.5 cm L
21964	TSKgel SP-STAT, 7 µm	Polymer	Stainless steel	4.6 mm ID x 10 cm L
21965	TSKgel CM-STAT, 10 µm	Polymer	Stainless steel	3.0 mm ID x 3.5 cm L
21966	TSKgel CM-STAT, 7 µm	Polymer	Stainless steel	4.6 mm ID x 10 cm L

#### Headquarters

JSB International  
Tramstraat 15  
5611 CM Eindhoven  
T +31 (0) 40 251 47 53  
F +31 (0) 40 251 47 58

Zoex Europe  
Tramstraat 15  
5611 CM Eindhoven  
T +31 (0) 40 257 39 72  
F +31 (0) 40 251 47 58

#### Sales and Service

Netherlands  
Apolloweg 2B  
8239 DA Lelystad  
T +31 (0) 320 87 00 18  
F +31 (0) 320 87 00 19

Belgium  
Grensstraat 7  
Box 3 1831 Diegem  
T +32 (0) 2 721 92 11  
F +32 (0) 2 720 76 22

Germany  
Max-Planck-Strasse 4  
D-47475 Kamp-Lintfort  
T +49 (0) 28 42 9280 799  
F +49 (0) 28 42 9732 638

UK & Ireland  
Cedar Court,  
Grove Park Business Est.  
White Waltham, Maidenhead  
Berks, SL6 3LW  
T +44 (0) 16 288 220 48  
F +44 (0) 70 394 006 78

[info@go-jsb.com](mailto:info@go-jsb.com)  
[www.go-jsb.com](http://www.go-jsb.com)



With courtesy of

TOSOH

# TOSOH BIOSCIENCE<sup>®</sup>

