

# MiniChrom FOR TOYOPEARL AND TSKgel

MiniChrom columns for TOYOPEARL and TSKgel are part of the method development platform available from Tosoh Bioscience. The columns (5 mL, 8 mm ID x 10 cm L) are prepacked with a range of TOYOPEARL or TSKgel chromatography resins. They are designed for method optimization, parameter screening and/or small scale purifications.

After selecting the preferred resin for a given purification task e.g. by high throughput resin screening with ToyoScreen Robocolumns on robotic workstations or with ToyoScreen columns, the 5 mL MiniChrom columns are the ideal tool to further optimize the purification method and to confirm the operational window.

## KEY FEATURES

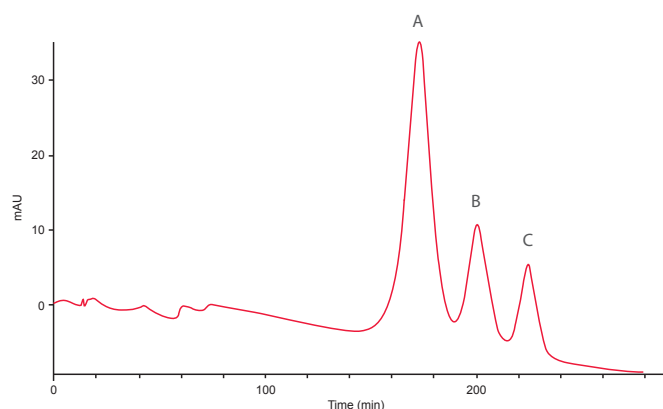
- Prepacked with 16 TOYOPEARL or TSKgel resins
- Ready-to-use 5 mL prepacked columns
- Direct connection to common laboratory LC Systems
- Reliable and reproducible results
- Ideal for parameter screening and method optimization

## COLUMN CHARACTERISTICS

MiniChrom columns are made of biocompatible polyethylene and polypropylene. Each column is individually packed under optimum compression, ensuring consistent experimental results. The columns can be connected directly to any laboratory liquid chromatography system via standard HPLC connectors (M10-32 for 1/16" tubing) and is ready for equilibration in the buffer of choice. Two columns can be connected in series to increase the column height in order to model real conditions in pilot scale or for scale down experiments.

MiniChrom columns for TOYOPEARL and TSKgel are packed by Atoll GmbH and are available with a broad range of ion exchange, hydrophobic interaction, mixed-mode and Protein A affinity resins. TOYOPEARL and TSKgel resins are composed of a rigid polymethacrylate matrix that has excellent pressure/flow properties. For the specific features of the resins offered in MiniChrom format please refer to the respective product flyer or our Chromatographic Process Media Catalog.

## HIC SEPARATION ON MiniChrom BUTYL-650M



➤ **Figure 1**

Column: MiniChrom Butyl-650M, 8 mm ID x 10 cm L, 5 mL  
 Mobile Phase: A: 100 mmol/L Phosphate buffer + 1.8 mol/L ammonium sulphate (pH 7); B: 100 mmol/L Phosphate buffer (pH 7)  
 Flow Rate: 150 cm/h, 1.3 mL/min; Gradient: 0.83 % B/min  
 Sample: Lysozyme (A), Chymotrypsin (B),  $\alpha$ -Chymotrypsinogen A (C)



## Ordering Information

### TOYOPEARL and TSKgel MiniChrom

Part-No	Description	Volume (mL)	Particle size (µm)	Dynamic Capacity (mg/mL resin)
0045101	MiniChrom GigaCap S-650M	5	75	136-176 (γ-globulin)
0045102	MiniChrom GigaCap S-650S	5	35	> 150 (γ-globulin) >
0045103	MiniChrom GigaCap CM-650M	5	75	110 (γ-globulin) >
0045104	MiniChrom GigaCap Q-650M	5	75	162 (BSA)
0045105	MiniChrom GigaCap Q-650S	5	35	> 170 (BSA)
0045106	MiniChrom GigaCap DEAE-650M	5	20	> 156 (BSA)
0045121	MiniChrom SuperQ-5PW (20)	5	65	> 52-88 (BSA)
0045122	MiniChrom Phenyl-650M	5	35	> 30-50 (Lysozyme)
0045123	MiniChrom Phenyl-650S	5	65	> 30-50 (Lysozyme)
0045124	MiniChrom Phenyl-650M	5	65	> 30-50 (Lysozyme)
0045125	MiniChrom Phenyl-600M	5	65	> 45-65 (Lysozyme)
0045126	MiniChrom PPG-600M MiniChrom	5	35	> 45-55 (Lysozyme)
0045127	Butyl-650M MiniChrom Butyl-650S	5	65	> 30-50 (Lysozyme)
0045151	MiniChrom Butyl-600M MiniChrom	5	65	> 30-50 (Lysozyme)
0045161	MX-Trp-650M MiniChrom AF- rProtein A HC-650F	5	45	> 40-60 (γ-globulin) > 75 (IgG) > 68 (IgG)

MiniChrom Columns packed with other TOYOPEARL or TSKgel resins are available on request.

#### Headquarters

JSB International  
Tramstraat 15  
5611 CM Eindhoven  
T +31 (0) 40 251 47 53  
F +31 (0) 40 251 47 58

Zoex Europe  
Tramstraat 15  
5611 CM Eindhoven  
T +31 (0) 40 257 39 72  
F +31 (0) 40 251 47 58

#### Sales and Service

Netherlands  
Apolloweg 2B  
8239 DA Lelystad  
T +31 (0) 320 87 00 18  
F +31 (0) 320 87 00 19

Belgium  
Grensstraat 7  
Box 3 1831 Diegem  
T +32 (0) 2 721 92 11  
F +32 (0) 2 720 76 22

Germany  
Max-Planck-Strasse 4  
D-47475 Kamp-Lintfort  
T +49 (0) 28 42 9280 799  
F +49 (0) 28 42 9732 638

UK & Ireland  
Cedar Court,  
Grove Park Business Est.  
White Waltham, Maidenhead  
Berks, SL6 3LW  
T +44 (0) 16 288 220 48  
F +44 (0) 70 394 006 78

[info@go-jsb.com](mailto:info@go-jsb.com)  
[www.go-jsb.com](http://www.go-jsb.com)



With courtesy of **TOSOH**

**TOSOH BIOSCIENCE** ©

